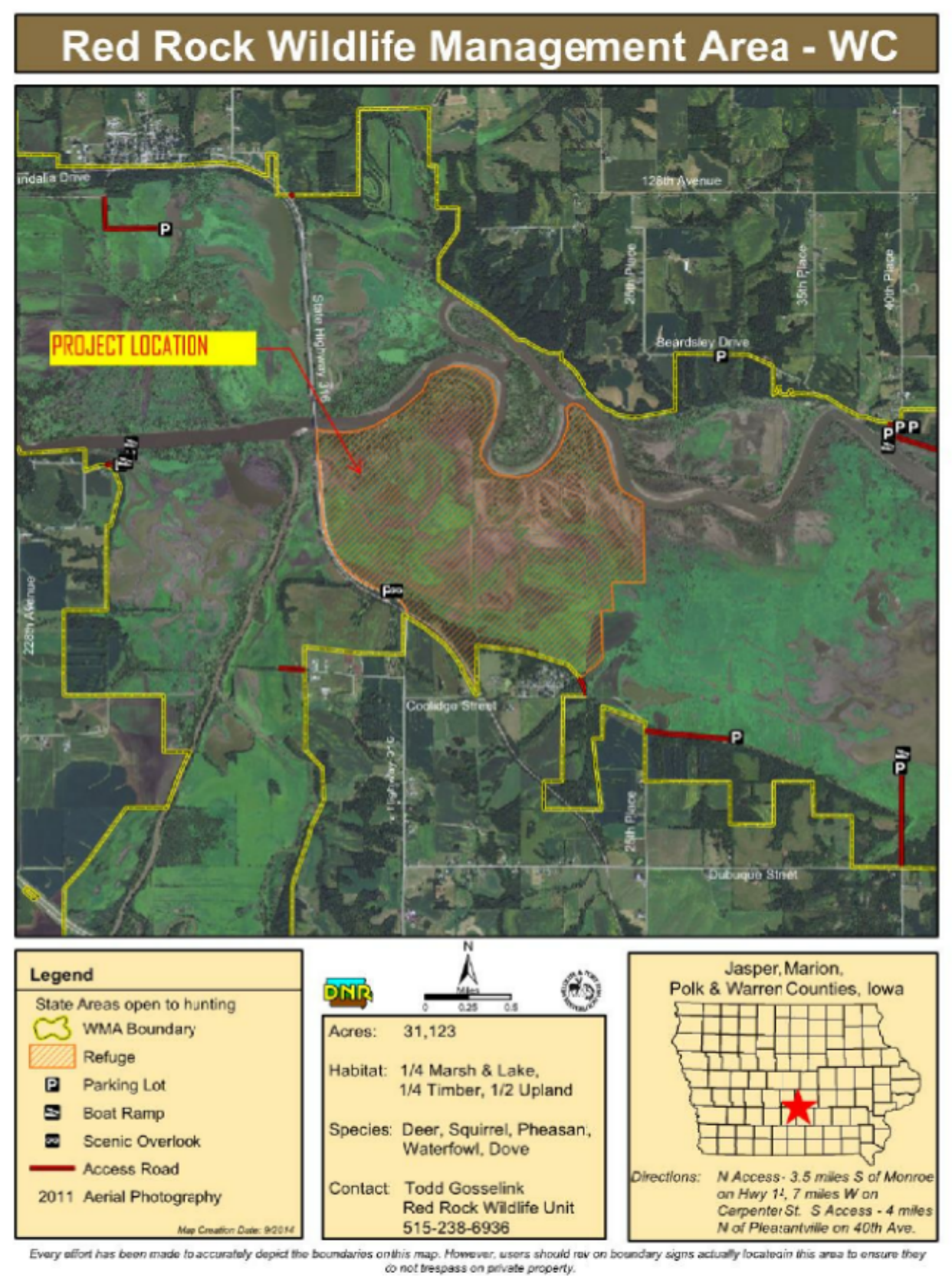
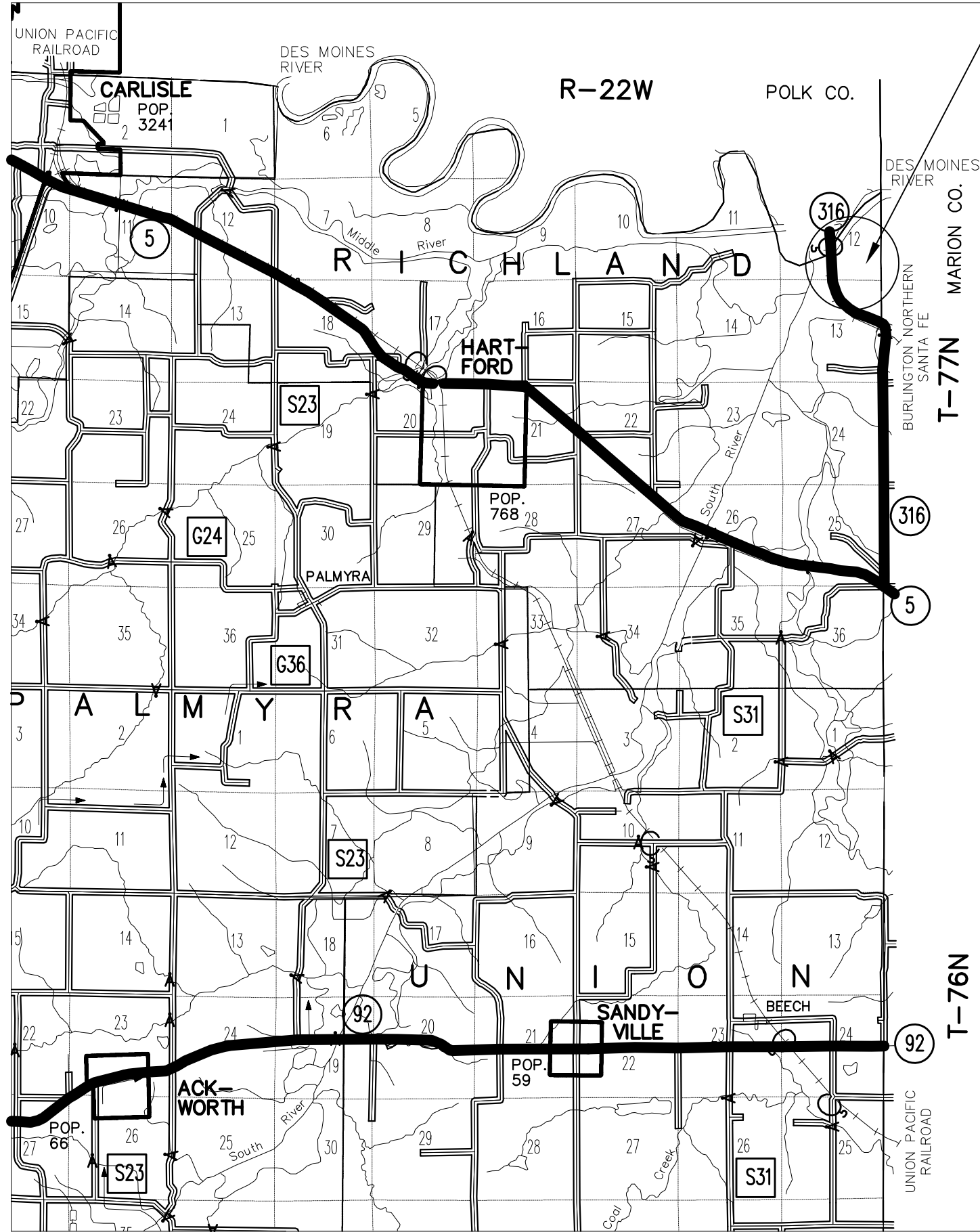
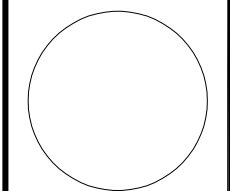


PROJECT LOCATION



CONSULTANT:



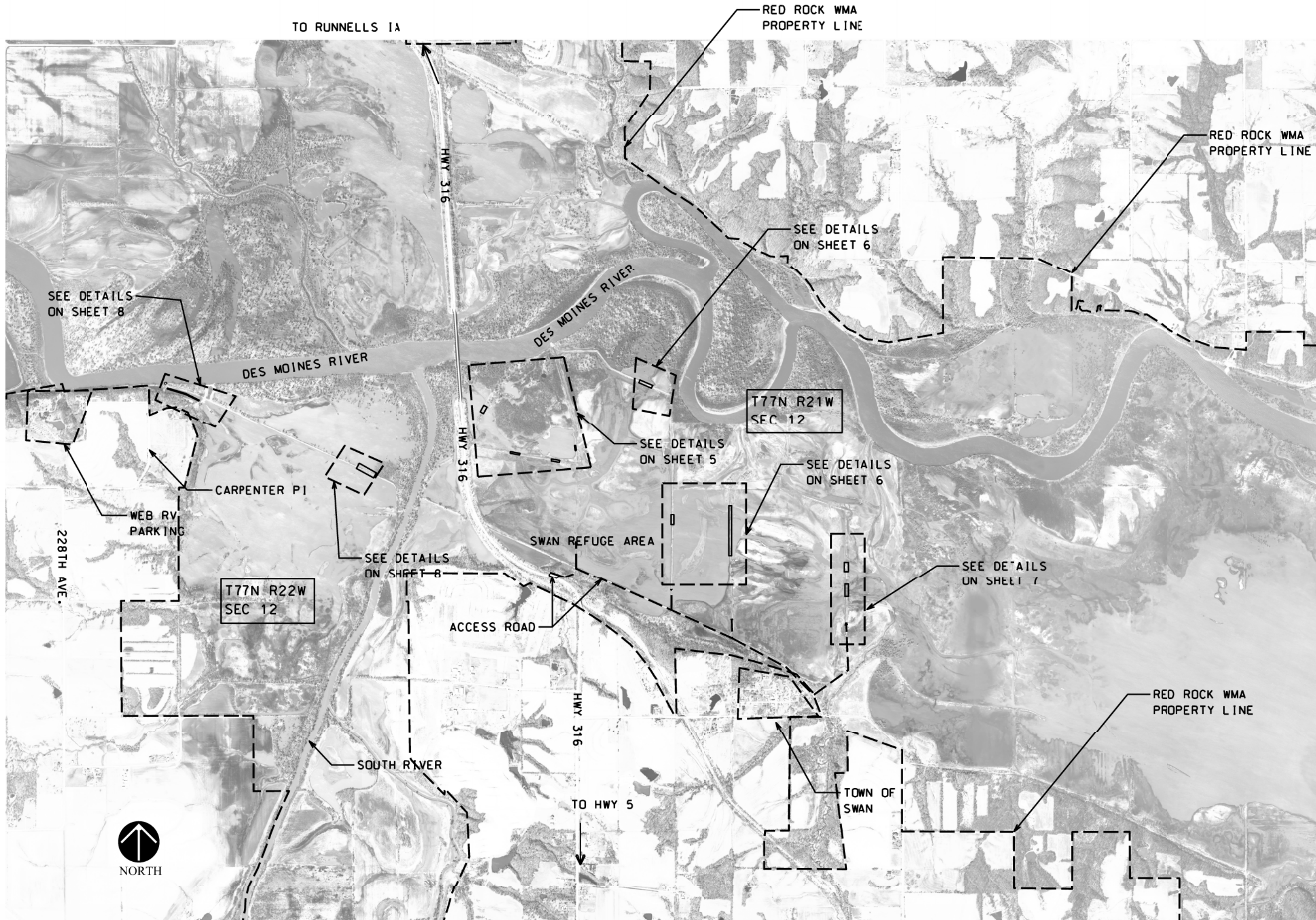
IOWA DEPARTMENT OF NATURAL RESOURCES
ENGINEERING SERVICES - WALLACE BUILDING
502 E. 9TH ST., DES MOINES, IA 50319-0034



PROJECT LOCATION
SWAN REFUGE DIKE REPAIR FOR:
RED ROCK WILDLIFE UNIT
MARION COUNTY, IA

NO.	BY	REVISION

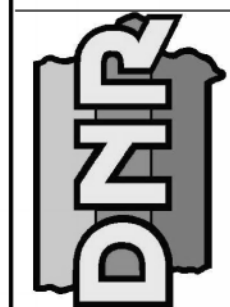
DRAWN BY:	PROJECT NUMBER:
E.S.	17-05-63-03
CHK'D BY:	DATE:
J.K.	SEPT/2017
SHEET No:	



CONSULTANT:

IOWA DEPARTMENT OF NATURAL RESOURCES

ENGINEERING SERVICES - WALLACE BUILDING
502 E. 9TH ST., DES MOINES, IA 50319-0034



SITE PLAN

SWAN REFUGE DIKE REPAIR FOR:

RED ROCK WILDLIFE MGT AREA

MARION COUNTY, IA

NO.	BY	REVISION

DRAWN BY:	PROJECT NUMBER:
ES	17-05-63-03
CHKD BY:	DATE:
DR	SEPT /2017
SHEET No:	

